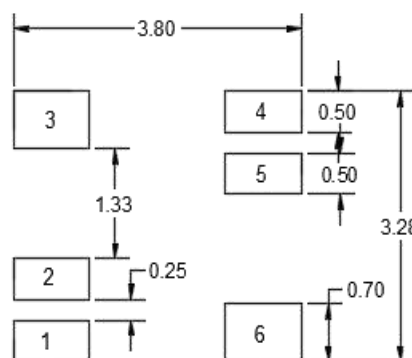
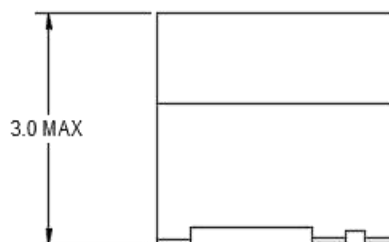
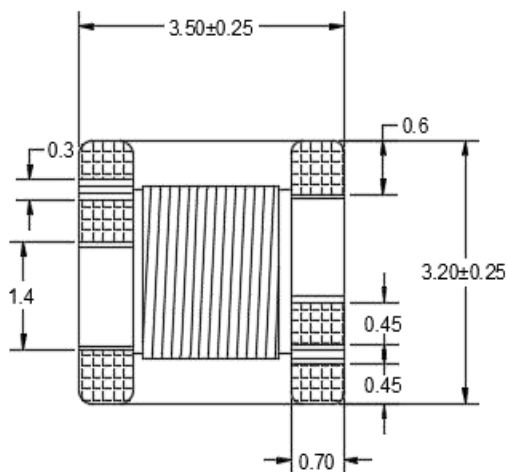


A. MECHANICAL(unit:mm)



SUGGESTED LAND PATTERN

S TM 3532 B N F - 121 T

A B C D E F G H

A: SHUNWEI

B: LAN Transformer

C: Dimension 3.5*3.2

D: CORE TYPE

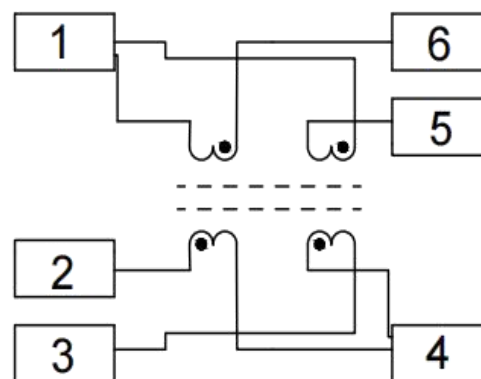
E: Material Ferrite Core

F: Leadfree

G: Inductance 121=120uH

H: Packaging T=Taping and Reel

B. SCHEMATICS





东莞顺为半导体有限公司

Dongguan Shunwei Semiconductor Co., Ltd.

C.Features

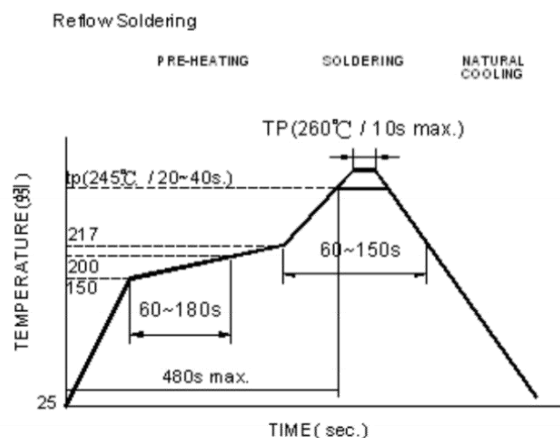
1. Compliant with ROHS requirements
2. Compliant with Halogen Free requirement
3. Compliant with IEEE 802.3an standard
4. Operating temperature -40°C to $+110^{\circ}\text{C}$
5. Support LAN interface for network equipment, communication equipment, digital appliances, etc

D. ELECTRICAL SPECIFICATIONS @25°C

Part Number	Turns Ratio $\pm 5\%$	Insertion Loss (dB Typ.)			Insertion Loss (dB Typ.)			OCL 100KHz/0.1V 8mA DC (uH Min) -25°C to $+110^{\circ}\text{C}$	OCL 100KHz/0.1V 8mA DC (uH Min) -40°C to -25°C	CW/W 100KHz /0.1V (pF Max)	PoE Rating	Leakage Inductance 100k/0.1v (uH Max)	Hi-pot Vrms 1mA 60S Min
		Max			Min								
		1-100 MHz	100-250 MHz	250-500 MHz	1-100 MHz	100-250 MHz	250-500 MHz						
STM3532NF-181T	1:1	-1.0	-2.0		-20	-10		180	160	35	NON-PoE	0.5	1500
STM3532NF-121T	1:1	-0.9	-1.6	-2.0	-20	-14	-12	120	100	35	NON-PoE	0.5	1500

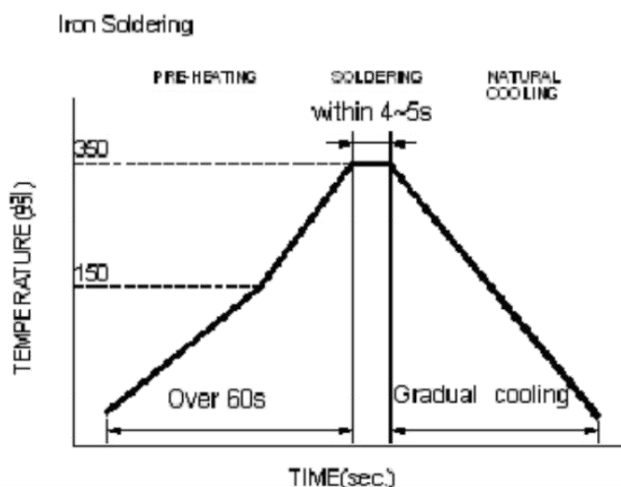
E. RECOMMEND REFLOW SOLDERING CURVE

1. Lead Free Solder re-flow



Reflow times: 3 times max.

2 Soldering Iron



Iron Soldering times: 1 times max.



东莞顺为半导体有限公司

Dongguan Shunwei Semiconductor Co., Ltd.

F. Typical Impedance v.s. Frequency Curve



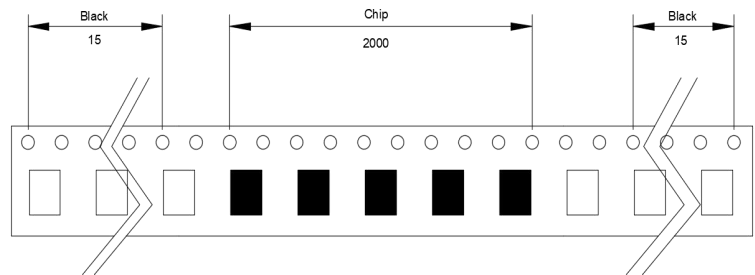
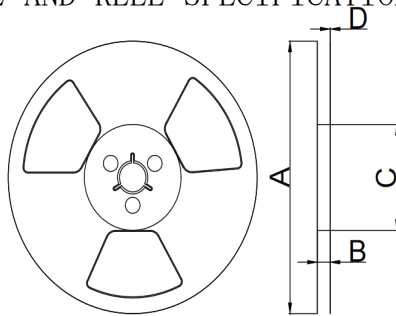
STM4532BNF-121T



STM4532BNF-181T

G. PACKAGE INFORMATION

1. TAPE AND REEL SPECIFICATIONS

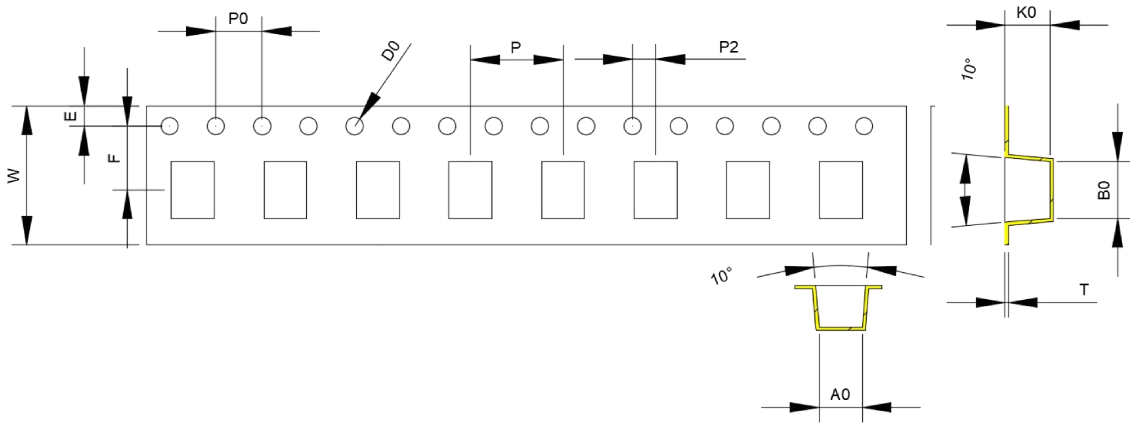


DIM A	DIM B	DIM C	DIM D
330 ± 2	13 ± 0.8	103 ± 2	1.6 ± 0.2



东莞顺为半导体有限公司

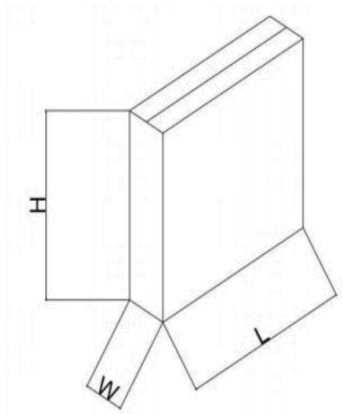
Dongguan Shunwei Semiconductor Co. , Ltd.



ITEM	W	A0	B0	K0	E	F	D0	P0	P	P2	T
DIM	12.00	3.70	3.88	3.60	1.75	5.50	1.50	4.00	8.00	2.00	0.30
TOLE	±0.3	±0.15	±0.15	±0.15	±0.10	±0.1	0.10	±0.10	±0.10	±0.10	±0.05

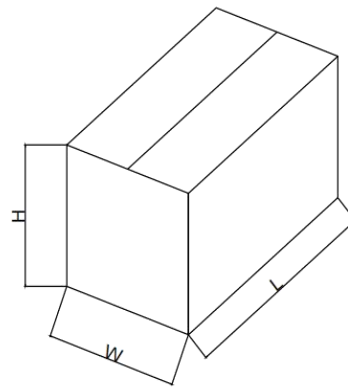
2. PACKAGE SPECIFICATIONS

Inner Carton



L (mm)	W (mm)	H (mm)
342 ± 2	100 ± 2	342 ± 2

Export Carton



L (mm)	W (mm)	H (mm)
345 ± 2	320 ± 2	355 ± 2